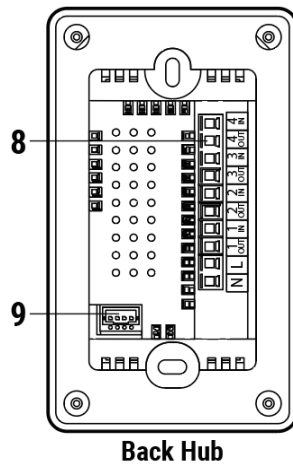
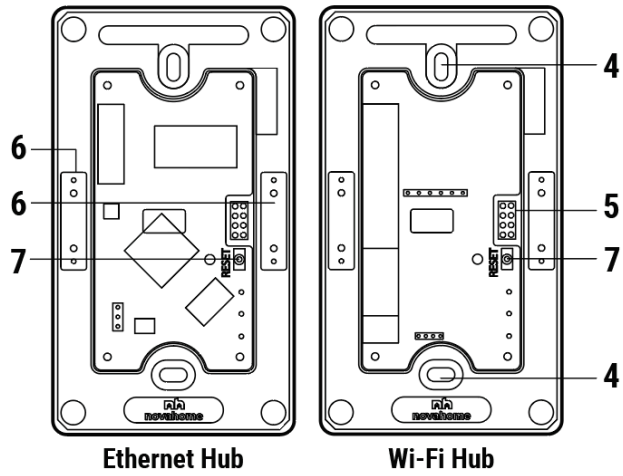
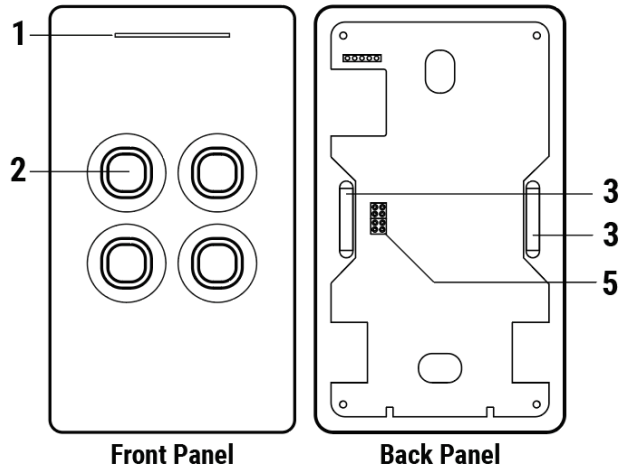


S2S Wired Multi Button Association Pairing-Unpairing

PRODUCT DETAILS	2
PRODUCT DIMENSIONS	4
IMPORTANT!!! Wall level finish and wall box mounting position:	5
A diagram of a wall with a door <small>Description automatically generated</small>	5
S2S Switch to Switch Wired Multi-Button Association Pairing/Unpairing	6

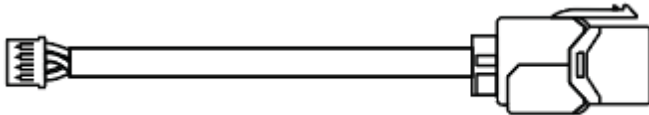
PRODUCT DETAILS



Labels:

1. Dimmable Status Led
Red - Offline
Blue - Online
2. Dimmable Touch Buttons
Red - ON
Blue - OFF/Standby
3. Magnet
4. Screw Hole
5. Pin
6. Metal Plate
7. Reset Button
8. Wire Terminal
9. Communication Port

Accessories:

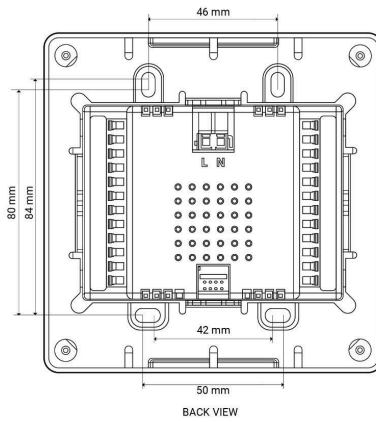
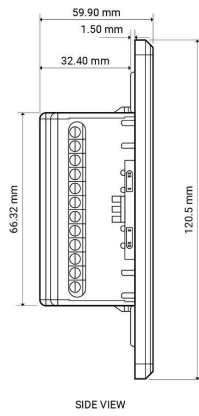
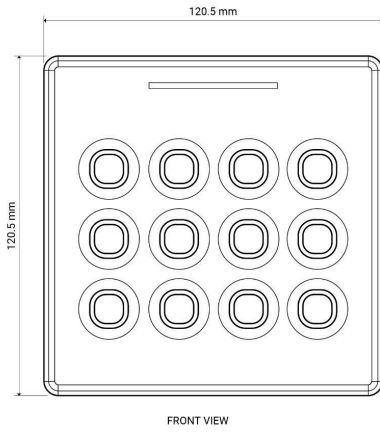
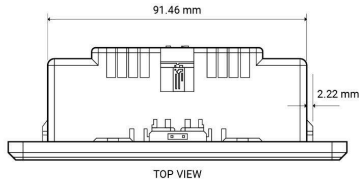
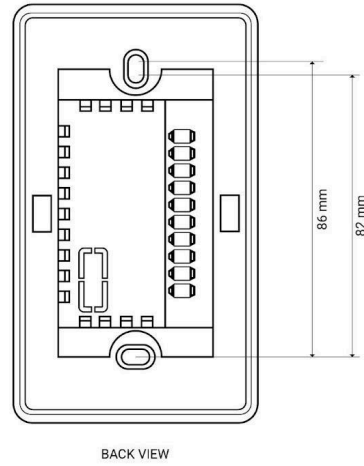
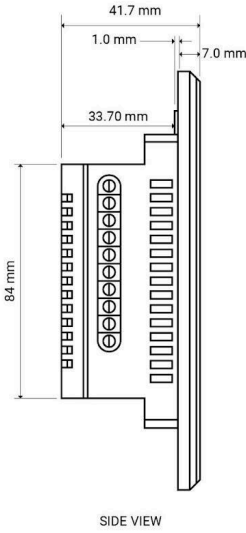
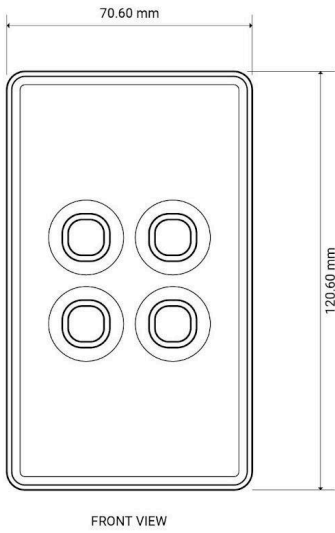
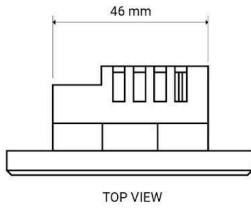


Communication Cable



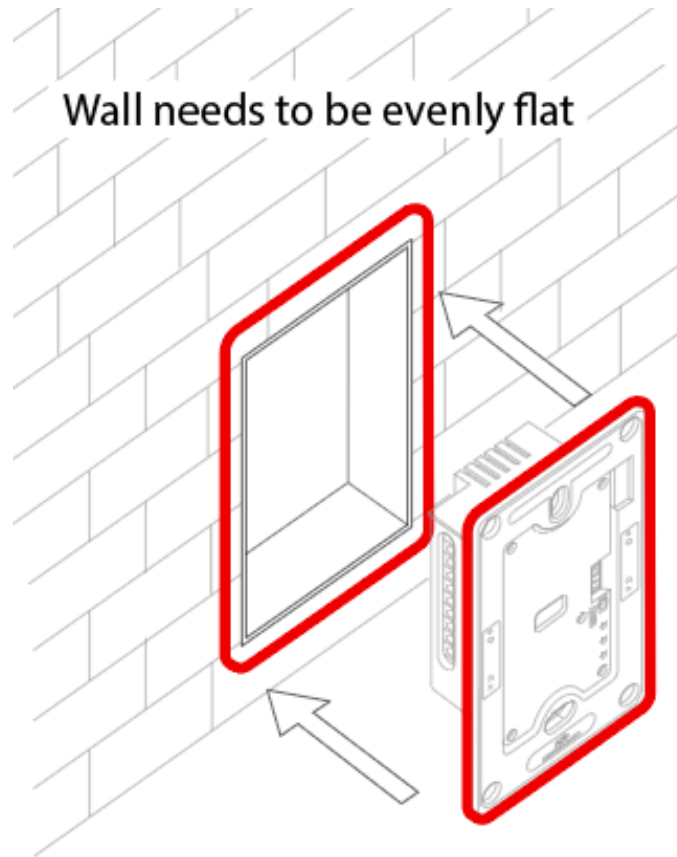
Wire Connectors

PRODUCT DIMENSIONS



IMPORTANT!!! Wall level finish and wall box mounting position:

Wall surface where the Switchhub will be Installed needs to be evenly flat. This is to ensure that the touch panel magnetic will 100% attach properly to the surface of the Switchhub.



S2S Switch to Switch Wired Multi-Button Association Pairing/Unpairing

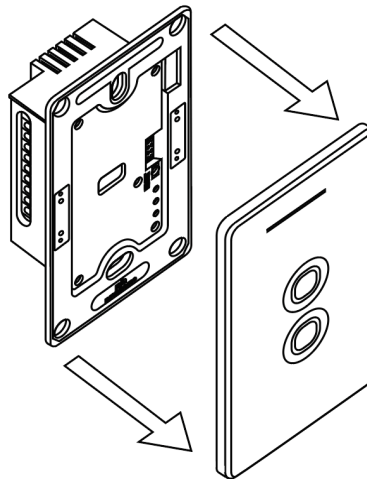
S2S is Switch to Switch direct wired association of switches same as 3 Way switching, except it's on a larger scale. Wired association is a stand alone feature that doesn't rely on smart hub or the internet to connect.

Note:

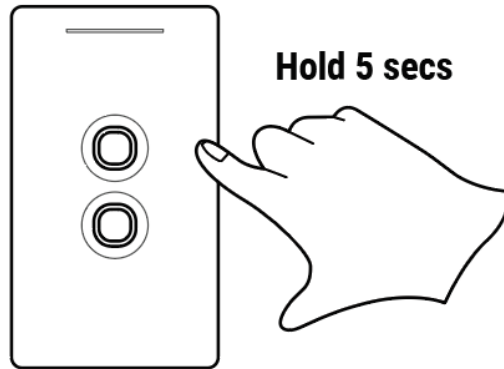
- Only available in Evolv S2S Switchhub. Max pairing up to 24 Switchhubs.
- Pairing needs at least two Switchhub to work.
- Make sure Switchhubs ports are wired together. Refer to S2S wire installation instructions.

To Pair

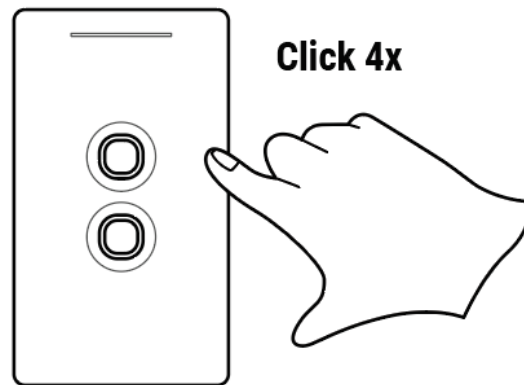
1. Decide what buttons to pair from Switchhub 1 and 2.
2. From Switchhub 1, Detach the smart touch panel from the main Hub. Pull by hand to detach.



3. Attach the smart touch panel back to the main Hub to power ON.
4. Immediately within 5 secs from power ON, press and hold the desired button you want to pair with Switchhub 2 until the status led and the selected button led flashes. The Switchhub 1 is now ready to receive command from Switchhub 2.



5. Go to Switchub 2 (Please allow 10s to pass before pressing Switchub 2), press the desired target button 4x. Pairing done.

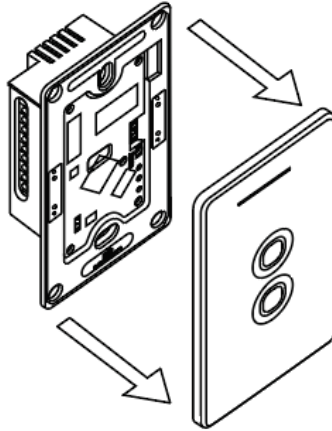


Note: test the buttons to see if pairing is successful.

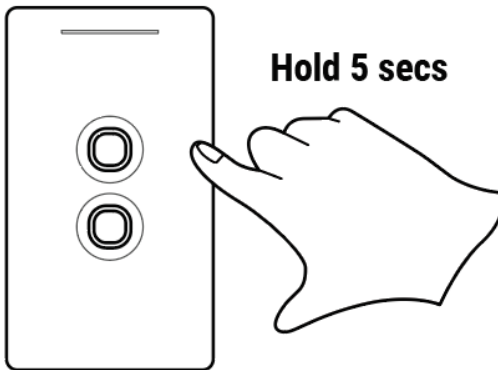
6. To pair additional devices/buttons, please repeat steps 1-5.

To Unpair

1. Decide what Switchub button to unpair.
2. Detach the smart touch panel from the main Hub. Pull by hand to detach.



3. Attach the smart touch panel back to the main Hub to power ON.
4. Immediately within 5 secs from power ON, press and hold the desired button you want to unpair until the status led and the selected button led flashes. The Switchhub is ready to receive command.



5. Press and hold the selected button until the button flashes fast. Unpairing done.

Note: Test the buttons to see if unpairing is successful.